

# New Covenant Church of Canada

Your community Church serving you proudly since 1993

## Annual Church Picnic 2007

@ Kelso Conservation Area

Milton, Ontario

PICNIC AREA# 6



## Saturday, July 21<sup>st</sup> @ 1:00pm

Park includes:

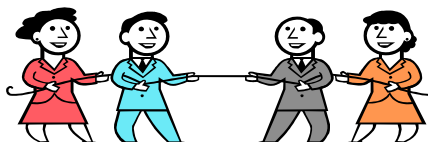
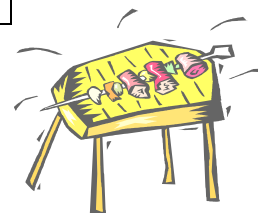
Playgrounds for the kids, Sandy beach,

Boat rentals also available!

Fun for everyone!!!

Lots of Games, Activities,

Bible Quiz & Water Baptisms



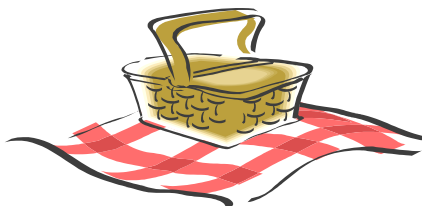
**\*Note: Each family is responsible for their own BBQ and cooking for the day.**

### Directions:

- ❖ From Highway 401, take Highway 25 north to Campbellville Road; go west to Tremaine Road. Go south until you reach Kelso Road. Turn right to park entrance.
- ❖ From Highway 5, take Tremaine Road north to Kelso Road. Turn left to park entrance.
- ❖ Follow "NCC picnic" signs to "Area # 6".

For further directions call Keslo Park: 905- 878-5011

For more details about picnic, please call  
Rev. Alexander David or Alvina David  
Phone: 905-696-7590 Toll Free: 1-800-330-9128  
Email: [info@sancc.org](mailto:info@sancc.org)  
Website: [www.sancc.org](http://www.sancc.org)



**Rates:** *(Effective January 1 · 2007. Rates are seasonal and subject to change)*

Adult (15 - 64) - \$5.00\*

Child (5 - 14) - \$3.50\*

Child (4 & under) - No charge

Seniors (65 & over with valid senior ID) - \$4.00\*